

Department of Botany

Herbarium Activity Report

Department of Botany is established in 1981. Since its establishment teachers of the department are actively participated in various activities like intensive and extensive plantation programmes, Nature club, Herbarium preparation and so on. Department has well established herbarium developed by Dr. D.M. Jadhav, Head, Department of Botany. The herbarium consists of preserved specimens of various families. Till date herbarium contains members of various 40 families. All the members of the herbarium are preserved in the form of 162 sheets. The most dominant families which represent maximum number of preserved specimens are *Compositae*, *Lamiaceae* and *Solanaceae*. Rest of the families are represented in the form of least number of specimens. The plants are collected and preserved in the form of herbarium by, teachers and students of the department under the guidance of Dr. D. M. Jadhav. Before past few years affiliated university banned plant collection in order to conservation of plant diversity. Since then, there is some disruption in the herbarium preparation by students. But, head of department is actively involved in the herbarium preparation till date.

As time passes, old prepared herbarium sheets become non-useful and loses plant parts. So, we have scanned all the herbarium sheets and prepared a e-herbarium We gave its access to our students also.

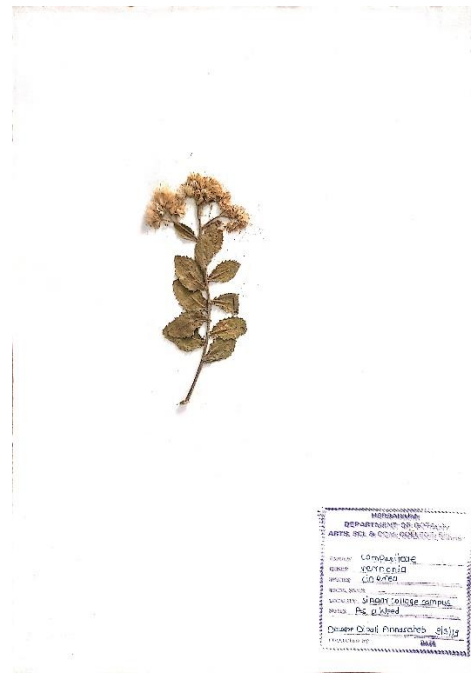
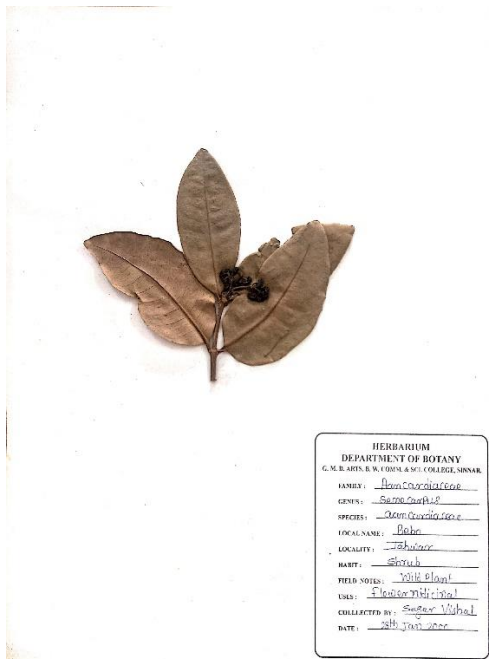
The list of families in Herbarium

Sr. No.	Family	No. of sheets
1.	Ranunculaceae	1
2.	Menispermaceae	1
3.	Papaveraceae	1
4.	Theaceae	1
5.	Brassicaceae (Cruciferae)	1
6.	Capparidaceae	3
7.	Malvaceae	6
8.	Sterculaceae	3

9.	Rutaceae	1
10.	Myrsinaceae	2
11.	Rubiaceae	3
12.	Papilionaceae	7
13.	Caesalpiniaceae	1
14.	Mimosaceae	1
15.	Combrataceae	2
16.	Melastomaceae	2
17.	Lythraceae	2
18.	Apiaceae (Umbelliferae)	1
19.	Compositae (Asteraceae)	32
20.	Oleaceae	2
21.	Apocynaceae	3
22.	Gentianaceae	2
23.	Asclepiadaceae	2
24.	Boraginaceae	1
25.	Convolvaceae	3
26.	Sapindaceae	1
27.	Anacardiaceae	2
28.	Solanaceae	10
29.	Scrophulariaceae	1
30.	Acanthaceae	8
31.	Verbenaceae	7
32.	Lamiaceae	23
33.	Bignonaceae	2
34.	Amaranthaceae	6
35.	Polygonaceae	2
36.	Elaeagnaceae	1
37.	Thymeleaceae	1
38.	Euphorbiaceae	8
39.	Urticaceae	1
40.	Rhamnaceae	5
Total No. of sheets		162

Importance of herbarium

1. From old days, herbarium is used as a crucial source for identification of plants.
2. Students can get an idea about the preservation of different plants.
3. Rare and non-local plants can be preserved for the information of students.
4. E-herbarium is helpful for the study of plants digitally.



Scanned herbarium sheets



Dr. D. M. Jadhav studying with herbarium specimen

HEAD
DEPARTMENT OF BOTANY
G. M. D. Arts, B. W. Commerce
and Science College, Sinnar



Principal
G. M. D. Arts, B. W. Commerce and
Science College, Sinnar, Dist. Nashik