



**Maratha Vidya Prasarak Samaj**

**G. M. D. Arts, B. W. Commerce and Science College, Sinnar, Dist. Nashik**

**Affiliated to Savitribai Phule Pune University, Pune**

**Id.No.PU/NS/ASC/013/1969**

**Best College Awarded by SPPU2012-13**

**AISHE:C-41292**

**[www.gmdcollege.in](http://www.gmdcollege.in)**

**ISO 9001:2015 Certified College**

**[sinnarcollege001@yahoo.com](mailto:sinnarcollege001@yahoo.com)**

## **INTERNAL QUALITY ASSURANCE CELL**

### **CRITERION VII: INSTITUTIONAL VALUES & BEST PRACTICES**



#### **7.1.2: 1. Alternate sources of energy and energy conservation measures**



Maratha Vidya Prasarak Samaj's  
**G.M.D. Arts, B.W. Commerce  
& Science College, Sinnar**

Tal. Sinnar, Dist. Nashik - 422 103 (M.S.) INDIA

Best College Award by Savitribai  
Phule Pune University 2012-13

**Dr. P. V. Rasal**

(M.A., LL.B., Ph.D.)

Member : B.O.S. (Psychology)

Savitribai Phule Pune University

E-mail : rasalpundlik@gmail.com

Affiliated to Savitribai Phule Pune

University ID No. : PU/NS/ASC/013/(1969)

Junior College No. J.13.13.001

HTE Sevaarth ID - 06220100119\_AST AISHE - C - 41292

Ref. No. 537/2023-24

Date : 13/07/2023

### DECLARATION

This is to declare that the information, reports, true copies of the supporting documents, numerical data, provided links, institutional data, photographs etc. submitted/presented herewith is verified by Internal Quality Assurance Cell (IQAC) of this college and is correct as per the records. This declaration is for the purpose of NAAC accreditation of HEI for the 4<sup>th</sup> Cycle during the period from 2017-2018 to 2021-2022.

Date: 13/07/2023

Place: Sinnar

**Dr. C. E. Gurule**  
Coordinator, IQAC  
Co-ordinator  
IQAC

G. M. D. Arts, B.W. Commerce & Science  
College, Sinnar, Dist. Nashik 422103



**Dr. P. V. Rasal**  
Chairman, IQAC and Principal

**PRINCIPAL**  
G.M.D.Arts, B.W.Commerce and  
Science College, Sinnar,Dist.Nashik

• Email - sinnarcollege001@yahoo.com / iqac@gmdcollege.in • Website - www.gmdcollege.in  
Office : (02551) 220099 • Fax : (02551) 220114

## TABLE OF CONTENTS

<b>Sr. No.</b>	<b>Particulars</b>	<b>Page No.</b>
1	Solar Supportive Facilities Photographs	5-6
2	Use of Solar Energy in the Campus	7-8

## Use of Solar Energy in the Campus

Sr. No.	Facilities	Capacity
1	Roof Top SOLAR Grid Connected to Solar Plant	15.3 kWh
2	Electricity Roof Top Solar Off Grid Solar System	7.5 kWh
3	Solar Water Heater System	2000 LPD

## Alternate Sources of Energy and Energy Conservation Measures

### 1. Electricity Roof top SOLAR Grid connected solar plant (15.3 kWh)



**SOLAR Grid Connected to Solar Plant (15.3 kWh)**



**Solar on Grid Invertor**

## **2. Electricity Roof Top Solar Off Grid Solar System (7.5 kWh)**



**Top Solar Off Grid Solar System (7.5 kWh)**

## **3. Solar Water Heater System (2000 LPD)**



**Solar Water Heater System (2000 LPD)**

The following are the major consumers of the solar electricity in the facility:



**Examination Section**



**IQAC & NAAC Room**



**Principal Office**



**Administrative office**



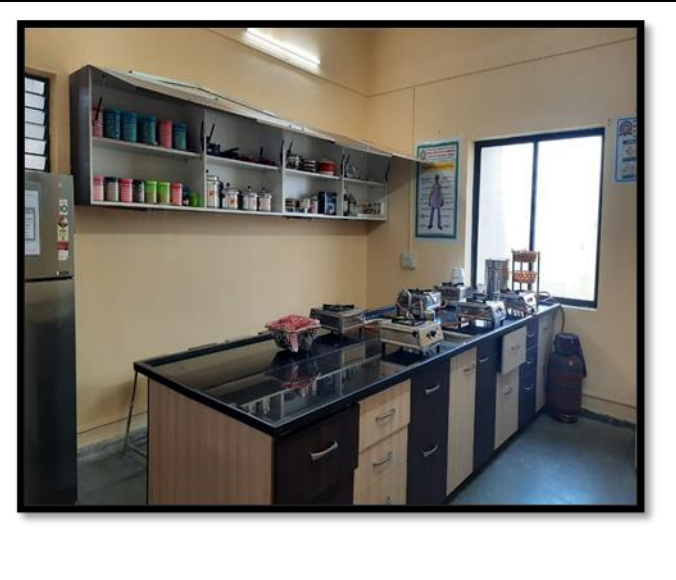
**UPS**



**Library**



**Computer Lab**



**B.Voc.**

*Neel*

**CO-ORDINATOR**  
IQAC  
G.M.D. Arts, B.W. Commerce  
And Science College, Sinnar



*Neel*  
**Principal**  
G. M. D. Arts, B. W. Commerce and  
Science College, Sinnar, Dist. Nashik